

INTERFACE

Lode Ergometer – Nihon Kohden 1550K` V1.00

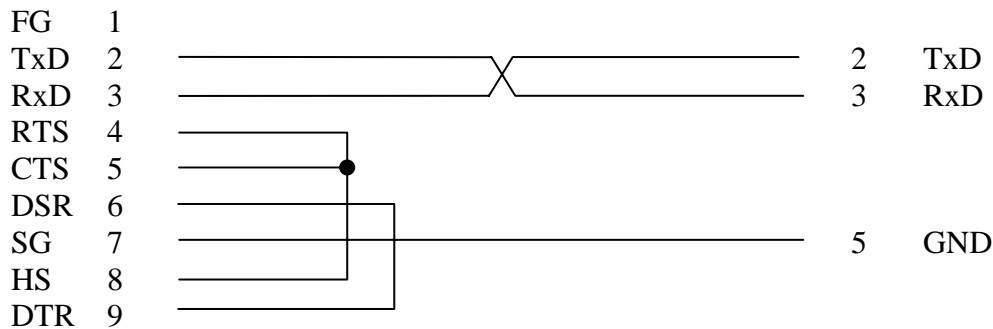
STEP I Setting up the hardware

Read *always* first the usermanual of the ergometer and ECG monitor.

1. Switch off the ergometer and the system.
2. You will need the RS-232 cable (part no. 930730) to establish communication between the Lode ergometer and your system. The lay-out of the cable is as follows:

Nihon Kohden ECG-1550-K
D-sub 9 pin Male

Ergometer
D-sub 9 pin Male



3. Connect the RS232 cable to the ergometer. Note that the connector on the cable marked for ergometers side is put to the RS232 in port of the ergometer.



the standard in Ergometry

INTERFACE

Lode Ergometer – Nihon Kohden 1550K

4. Connect the RS232 cable to the System. . Note that the connector marked for ECG system side is connected to the SIO 1 port.



5. If an internal blood pressure device will be used, you only need a trigger cable under exceptional conditions.
- In case the used ergometer is an Excalibur sport with blood pressure
 - Or when on special request of a customer a external triggered blood pressure unit in stead of standard blood pressure unit has been built in.
 - In these to cases you will need a trigger cable (part no. 930709). The lay-out of this cable is as follows:

Trigger cable 930709

Nihon Kohden 1550K
3,5 mm jackplug

LODE ergometer
7 pin din plug

Tip		Pin 3
Shield		Pin 2

INTERFACE

Lode Ergometer – Nihon Kohden 1550K

STEP II

Setting up the ergometer

6. Switch on the ergometer.
7. Select the Ergoline P10 protocol on the ergometer:
 - a. Select, by using the up/down keys, the menu "SYSTEM PARAMETER" and press enter
 - b. Select, by using the up/down keys, the menu "SETTINGS" and press enter
 - c. Select, by using the up/down keys, the menu "RS232 PROTOCOL" and press enter
 - d. Select, by using the up/down keys, the "ERGOLINE P10" and press enter.
 - e. Save the selected RS232 protocol.
8. For controlling the ergometer by the Nihon Kohden 1550K the ergometer should be set in "TERMINAL" mode. The "TERMINAL" mode should be selected as follows. After switching the ergometer on press enter, and select "TERMINAL" and press enter again

NOTE: You can also let the ergometer startup in "TERMINAL" mode every time you switch on the ergometer, by using the default start menu. To set up the ergometer for starting up in "TERMINAL" mode proceed as follows:

- Switch on the ergometer and press enter.
 - You will be in the "MAINMENU"
 - Select, by using the up/down keys, the menu "SYSTEM PARAMETER" and press enter
 - Select, by using the up/down keys, the menu "SETTINGS" and press enter
 - Press enter to confirm the menu "DEFAULTSTARTMENU"
 - Select "TERMINAL" and press enter
 - You will be asked to save the changes confirm with "YES"
 - If you switch off the ergometer it will start-up in the "TERMINAL" mode every time when the ergometer is switched on again.
9. The Lode ergometer is now ready for external control.



the standard in Ergometry

INTERFACE

Lode Ergometer – Nihon Kohden 1550K

STEP III Setting up the Nihon Kohden 1550K

10. Go from out of the MAIN MENU to **ERGOMETER**

Ergometer

11. Go fom out of the Ergometer to **MENU**

Menu

12. Go form out of Main menu to **SETUP**

Setup

13. Select **Default settings**

Default settings

14. Select **Exercise equipment connection** to ON

Exercise equipment connection :ON

15.If you want to use Blood pressure device in ergometer.
Select **Auto BP monitor connection** to ON
Select **Auto BP monitor type** to EGT

Auto BP monitor connection :ON

Auto BP monitor type :EGT

INTERFACE

Lode Ergometer – Nihon Kohden 1550K

16. Select Register to store the selection, select Exam.To store the selection and start a test.



Restart the ergometer and ECG device and then your system is ready to be used.

Remarks:

- The installation procedures of the Lode ergometers Corival, Angio and Excalibur (Sport) are all the same. The connection of the cables may be on slightly different places.

For questions and comments, you can contact the Lode service department by e-mail at service@lode.nl or by telephone at +31 50 5712811.

Lode B.V.
Zernikepark 16
9747 AN Groningen
The Netherlands
Tel.: 31(0)50 5712811
Fax: 31(0)50 5716746



ISO 9001:2000 and ISO 13485:2003 certified
e-mail: ask@lode.nl
<http://www.lode.nl>